



Tintable FLOOR-TEX[®]

DECORATIVE TEXTURE COATING

SEAL-KRETE[®] Floor-Tex[®] is a durable, non-slip, texture coating that provides a decorative finish for concrete and masonry surfaces such as pool decks, patios, porches, ramps and walkways. Paintable and tintable, this premium acrylic formula hides surface imperfections while providing a tough finish that resists damage from moisture, salt, oil, gas and chlorine. Performance-tested on commercial traffic sites, Floor-Tex outwears conventional anti-skid coatings, paints and stains. It's also suitable for wood stairs.

Important: Read all directions thoroughly. Recommended: Wear gloves and safety glasses.

SURFACE PREP

Surface must be clean, dry and oil-free. Power washing is recommended. Remove all curing compounds, releasing agents, peeling paint and excessive chalk. Repair cracks and surface breaks. Mask off areas not to be coated.

Oil Stains: Use a strong degreaser such as SEAL-KRETE OSR to lift oil stains.

Surface Cracks: Use a paintable acrylic or urethane caulk to repair hairline cracks. For other cracks (up to 3/8" wide), use a flexible, acrylic concrete patch or filler. Let all materials cure fully.

New or smooth-troweled concrete (carports, etc.): Etch surface with SEAL-KRETE Clean-n-Etch to promote proper adhesion. For complete procedure visit our web site (www.seal-krete.com). Do not apply to concrete that has not cured for at least 30 days.

APPLICATION

Read "LIMITATIONS" section before use. A minimum of 2 coats is recommended. Apply first coat and let dry to touch, then apply second coat in a direction perpendicular to the first.

Brush: Use a high quality, nylon bristle brush.

Roller: Use a short nap (3/16") cover – synthetic or mohair blend.

Sprayer: Use Floor-Tex PROFORMANCE for spray application or decorative stenciling.

TINT LIMITS: Up to 4 ozs. colorant per gal. white base; up to 5 ozs. colorant per gal. deep base.

TOPCOATING: For a satin finish, wait 24 hours before applying Floor-Tex Topcoat sealer.

COVERAGE: 1 gallon covers approx. 120 sq.ft. (60 sq.ft./2 coats), depending on substrate and thickness applied.

DRY TIME: Dry to touch in 1-4 hours. Dry to foot traffic in 24 hours. Will accept vehicular traffic in 3-5 days. **Note:** Dry times vary depending on temperature and humidity.

CLEAN-UP & STORAGE: Clean all tools immediately after use with soap and water. Store unused product in a dry place above 32°F.

MAINTENANCE: Clean occasionally with a mild soap and water solution. Do not use solvent, citrus or oil-based cleaners. If needed, scrub surface with a soft bristle brush or shop broom. Rinse with a garden hose or power washer (less than 1200 psi) held at least 18-inches from the surface, using a fan spray pattern. Re-apply sealer every 2 years, or as needed.

LIMITATIONS: Do not apply if rain is expected within 24 hours or if temperatures fall below 50°F within 24 hours of application. Do not apply below grade. Do not use on basement walls or in areas subject to hydrostatic pressure or standing water. Do not apply to concrete that has not fully cured.

CAUTION: KEEP OUT OF REACH OF CHILDREN.

FIRST AID: For Eye Contact: Flush with water for 15 minutes. **For Skin Contact:** Prolonged contact may cause irritation. Wash affected area with soap and water. **If Swallowed:** Induce vomiting and seek immediate medical attention. **If Inhaled:** If headache or nausea is experienced, remove the individual to fresh air. If symptoms persist, seek medical attention.



Product	No.	Unit	UPC Code	Carton Bar Code	Carton Size (L x W x H)	Carton Size (cubic ft / lbs)	Carton Qty	Pallet Qty
Floor-Tex White Base	440001	1 gallon	0 15944 44001 0	1 00 15944 44001 7	14 x 14 x 8	.91 / 51.50	4	45
Floor-Tex White Base	440005	5 gallon	0 15944 44005 8	0 00 15944 44005 8	12 x 12 x 15	1.25 / 61	1	36
Floor-Tex Deep Base	450001	1 gallon	0 15944 45001 9	1 00 15944 45001 6	14 x 14 x 8	.91 / 50.50	4	45
Floor-Tex Deep Base	450005	5 gallon	0 15944 45005 7	0 00 15944 45005 7	12 x 12 x 15	1.25 / 61	1	36



For PATIOS, POOL DECKS, STAIRS, RAMPS, PORCHES, WALKWAYS & MORE
DURABLE, NON-SLIP COATING • HIDES IMPERFECTIONS • OIL, SALT & CHLORINE RESISTANT

TECHNICAL INFORMATION

- Solids: 60%
- Acrylic Resin: Proprietary
- Water-based
- Odor: Low
- Clean-up: Soap and water
- Shelf Life: > 2 years (closed container)
- VOC < 250 g/l – EPA Method 24 – Floor Coating

ASTM TESTING (on smooth, bare, etched concrete)

- ASTM G-23 UV-resistance: 1200 hours
- ASTM E-84 Flame Spread: Pass
- ASTM C355-64 Water Vapor Transmission: 10.9 perms
- ASTM D412-75 Tensile Strength: 2239 psi, 50% Elongation
- ASTM D 5590-00 Mildew Resistance: Excellent
- ASTM D2241 Abrasion Resistance: .0195 grams lost

CHEMICAL/SOLVENT RESISTANCE - ASTM D-1308

(One hour spot test)

- Water: resistant
- Gas: resistant
- Oil: resistant
- Salt: resistant
- Chlorine: resistant

LIMITED WARRANTY: Manufacturer/Seller makes no warranty of any kind except that this product is free from defect and is of merchantable quality. Buyer remedy for breach of warranty is limited to replacement of Seal-Krete product or refund of purchase price. Convenience Products will not be responsible for labor or the cost of labor for removal or application of any product.

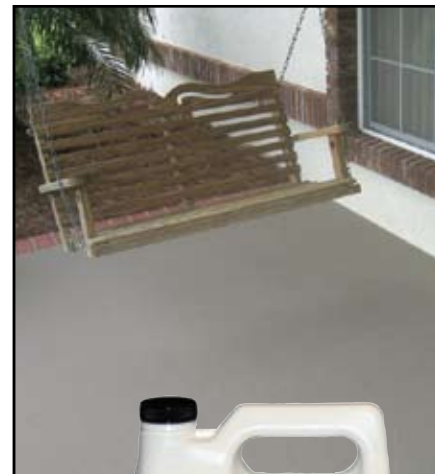
TECHNICAL SUPPORT: For more information on surface prep or application guidelines, or to obtain a Material Safety Data Sheet, call 1-800-323-7357, M-F (8:00 am – 5:00 pm EST) or visit our website at www.seal-krete.com.

Give new life to patios, driveways, walkways, porches, steps and more with Floor-Tex decorative texture coating. It hides imperfections while providing a beautiful decorative surface that can be tinted to match your home decor!

- Great for Pool Decks – Barefoot Friendly
- Provides A Matte Finish



- Meets ADA Requirements for Non-slip Surfaces
- Premium, Water-based Acrylic
- Easy Brush / Roller Application
- Self-priming
- Paintable / Tintable
- Interior / Exterior Use
- Low VOCs



Finish the job by sealing your project with Floor-Tex TOPCOAT clear protective sealer.

402001

Country of Origin: U.S.A.

*Sanding or removing paint containing lead may be hazardous. For information, contact the Natural Lead Information Center at 1-800-424-LEAD or www.epa.gov/lead.



Convenience Products

306 Gandy Rd., Auburndale, FL 33823 USA

Questions or comments? e-mail: tech@seal-krete.com or call 1-800-323-7357

How to treat concrete[®]

www.seal-krete.com

64016-071911-SK